



8323

Cylinder-arm hot-air welding machines
for the continuous seam sealing (taping)

8323



KEY COMPETENCE TAPING

More than 50 years ago, PFAFF INDUSTRIAL launched the first hot-air taping machine for continuous seam sealing of water-resistant, waterproof and breathable materials. Today, PFAFF INDUSTRIAL is the absolute innovation and technology leader in this segment. Unique technical refinements and product variations tailored to the areas of application characterize the PFAFF hot-air taping machines. The PFAFF 8323 are free-arm machines, predestined for processing three-dimensional parts and voluminous materials with tight radii.



FEATURES OF THE PFAFF 8323:

- Traditional tape welding combined with the possibility of programmed welding
- „Dynamic Welding“ and the new differential feed guarantee top seam quality
- Maximum reproducibility of the welding process
- Tape cutter
- 20% increased productivity in comparison to other tape welding machines
- Up to 15% reduction of the amount of tape used compared to standard machines
- Touch screen for easy operation with pictograms
- Various operator levels possible, with password protection, e.g. fixed parameters cannot be altered by the operator
- Monitoring of the heating temperature with two sensors (optional)
- Individual segments as well as complete sequences can be programmed
- Automatic monitoring and maintaining of all pre-set or programmed parameters
- Exactly reproducible nozzle setting with x/y-carriages
- During the production sequence programs and parameters can be transferred via SD-card to other machines
- **NEW:** Version with 6 KW power - for processing materials (e.g. filters) with high temperatures

8323



Unique "Added Features" for more quality and performance

Exact reproducibility with programmed taping

Both individual segments and complete cycles can be programmed. Created programs and parameters can be transferred to other machines in the production process.

Differential feed

Two separate drive motors for the top and bottom feed roller guarantee an optimum adaptation to the operation (e.g. smooth seams or fullness for formed parts).

Dynamic Welding

Automatic adjustment of the heating power to the variable speed. Two temperature sensors (optional) enable the control of the heating temperature. Automatic monitoring and adjustment of all pre-set or programmed parameters.

Tape cutter with separate drive

Trimming of the seam tape becomes unnecessary (welding from the beginning of the tape), resulting in a considerable reduction of the tape used. The tape cutter is electronically controlled, with precision adjustment for optimum setting.

Variable post- and roller concept

Customer application in focus! Variable post concept (roller width 25 - 50 mm and post positions like post from front, vertical post, post from side and post from back)

8323

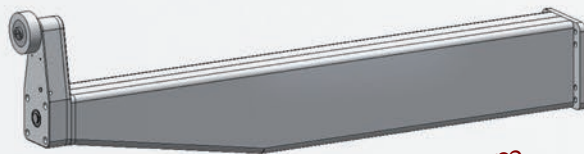


PFAFF 8323: The TRANSFORMER

Different arm version in different lengths. This variance of a hot-air tape machine series is unique in the industry. This ensures that the customer gets a solution tailored to his application. That means in concrete terms: Better handling = higher quality and performance. On the following pages you will find some product variants, implemented for our customers all over the world.



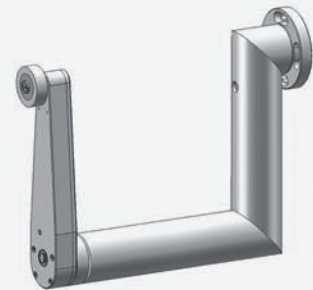
Cylinder post 500 - 1000 mm



Vertical post 500 - 1000 mm



Swivel post 500 - 1000 mm





PFAFF 8323: Standard

The machine is equipped with standard cylinder arm. It impresses with its wide range of areas of applications, both in the apparel sector and in technical applications

8323



PFAFF 8323: For small radii

The very narrow cylinder arm is predestined for work on tubular materials with very tight radii (e.g. sleeves on protective clothing or filter bags)



PFAFF 8323: Special

Machine with reinforced arm and a special material guide, designed for seam sealing of convertible roofs

8323



PFAFF 8323: Long-arm

Maschine for processing filter tubes. The machine is equipped with long (narrow) cylinder arm (1,000 mm) for an easy handling

Technical data:

Width of nozzles:

10 - 30 mm (others available)

Net weight:

approx. 140 kg

Sealing speed:

max. 10 m/min (standard)

option up to 20 m/min available

Mains voltage set for:

230 V ± 10%, 50/60 Hz, 1 Phase

Power input:

3,700 W / 6.200 W

Heating capacity:

3,600 W / 6,000 W

Air consumption (6 bar):

approx. 150 l/min

Sealing temperature:

720 °C / 800 °C

Subject to alternations in design, dimensions and weight.

Pictures/graphics could show additional equipment.

**PFAFF Industriesysteme und Maschinen GmbH**

Hans-Geiger-Str. 12 – IG Nord

D-67661 Kaiserslautern

Telefon: +49-6301/3205-0

Telefax: +49-6301/3205-3171

E-mail: info@pfaff-industrial.com

Website: www.pfaff-industrial.com