

Excellence in seaming

# 8390

Mobile heat sealing machine  
(hot-air or hot-wedge version)  
for direct welding of heavy, large  
flexible thermoplastic materials



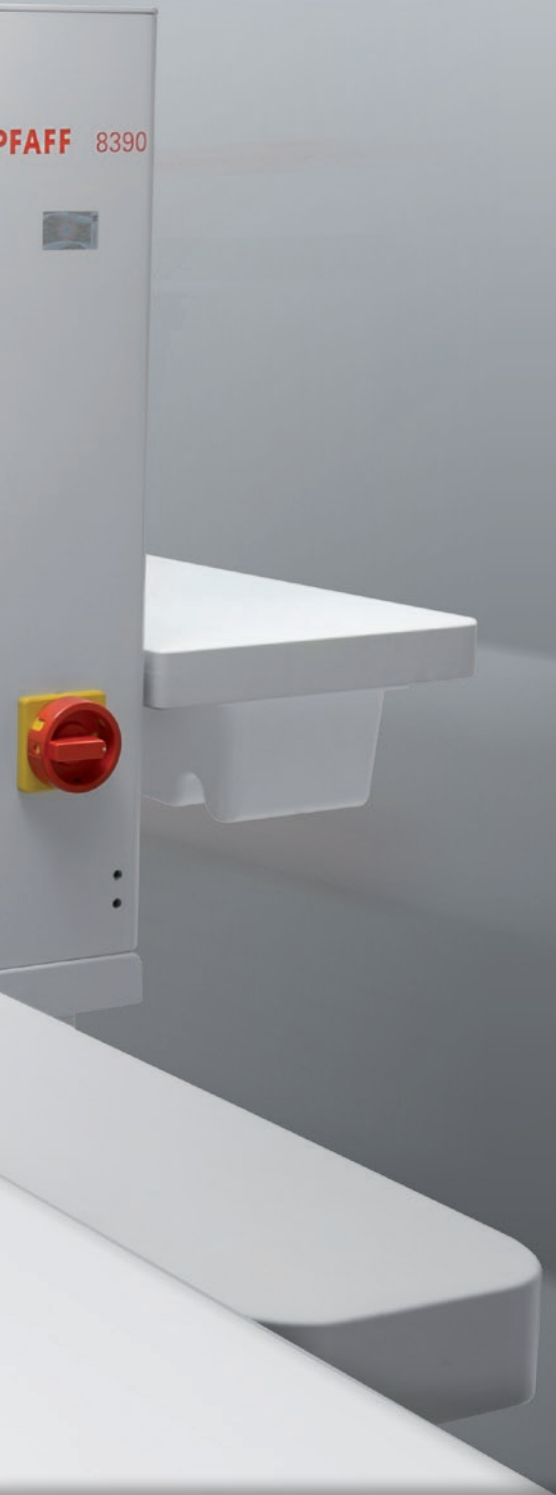
# PFAFF 8390



## Features:

- All parameters are controlled electronically
- User friendly operation
- Touch screen (no buttons, no gauges) and 100% parameter control
- 2 precision-controlled motors permit an extremely accurate differential transport, an additional motor for a synchronized control of the transport sled
- Maximum reproducibility of the welding process
- Transferable machine settings using files (SD card)
- Process control
- Accurate machine movement with chain- or gear rack drive
- Compatible with PFAFF 8309 track system
- Programmable start positioning and end positioning of welding
- Programmable rail beginning and end position
- Machine driving with pedal, display or joystick
- Slow start and slow end with a fast drive to start position





Flatbed machine  
(standard)



Flatbed machine with a  
high arm clearance for  
voluminous parts



Flatbed machine with  
right and left swivel unit



## Technical Data:

	8390-010	8390-020
Version	hot-wedge	hot-air
Electric power consumption	max. 1,500 W (230V)	max. 3,500 W (230V)
Air consumption	max. 30 l/min. (6 bar)	max. 150 l/min. (6 bar)
Welding speed	max. 10 m/min.	max. 10 m/min.
Welding width	from 7 mm - 50 mm	from 10 - 50 mm
Weight (net)	approx. 305 kg	approx. 305 kg



### PFAFF Industriesysteme und Maschinen GmbH

Hans-Geiger-Str. 12 – IG Nord  
D-67661 Kaiserslautern

Telefon: +49-6301/3205-0  
Telefax: +49-6301/3205-3171  
E-mail: [info@pfaff-industrial.com](mailto:info@pfaff-industrial.com)  
Website: [www.pfaff-industrial.com](http://www.pfaff-industrial.com)