

PFAFF[®] Industrial



5625

Single-needle double-chainstitch
sewing head for the use on
TAPE EDGE sewing units

Extremely reliable and powerful machine head - Made in Germany

5625

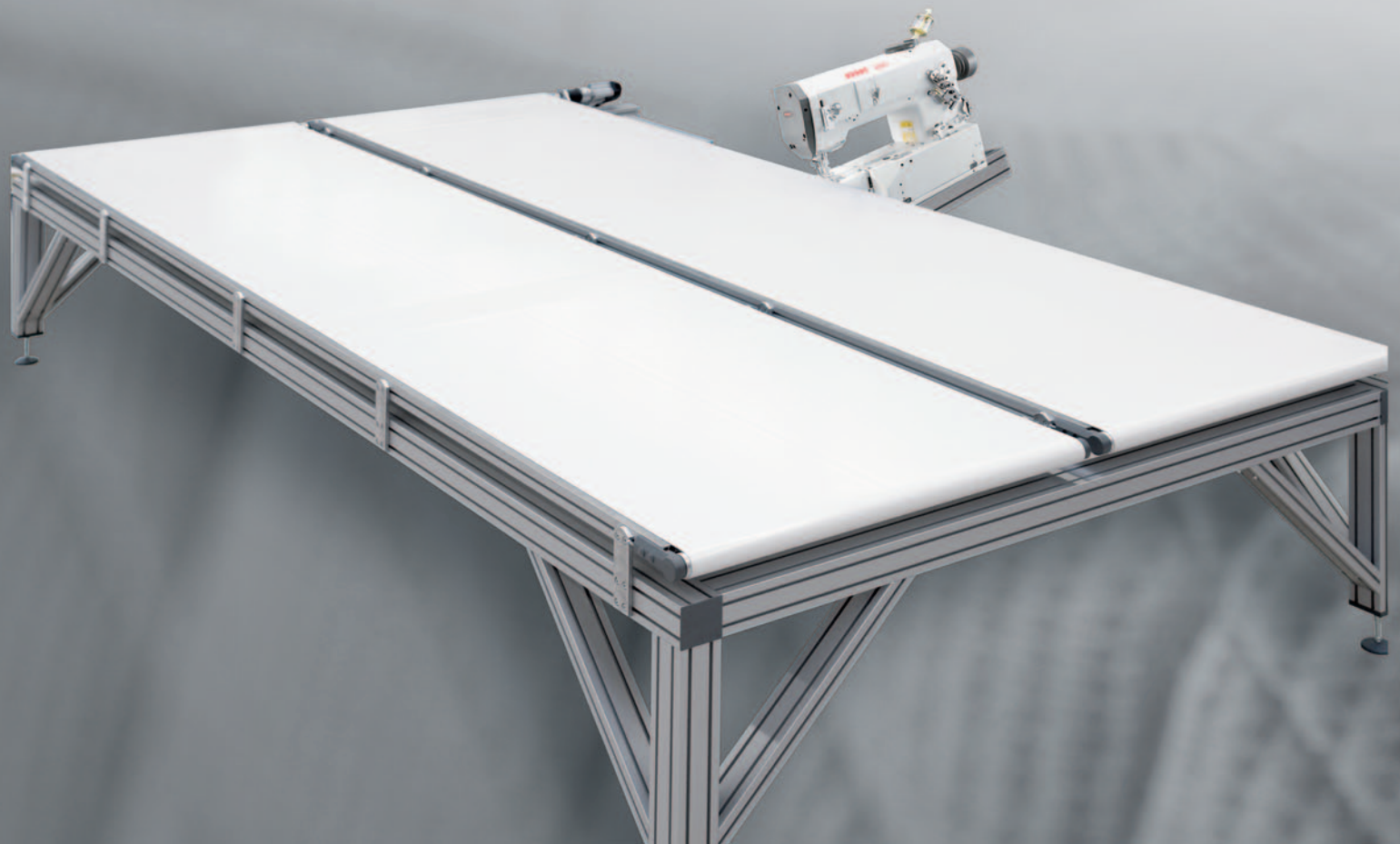
The special sewing head for the use on TAPE EDGE sewing units

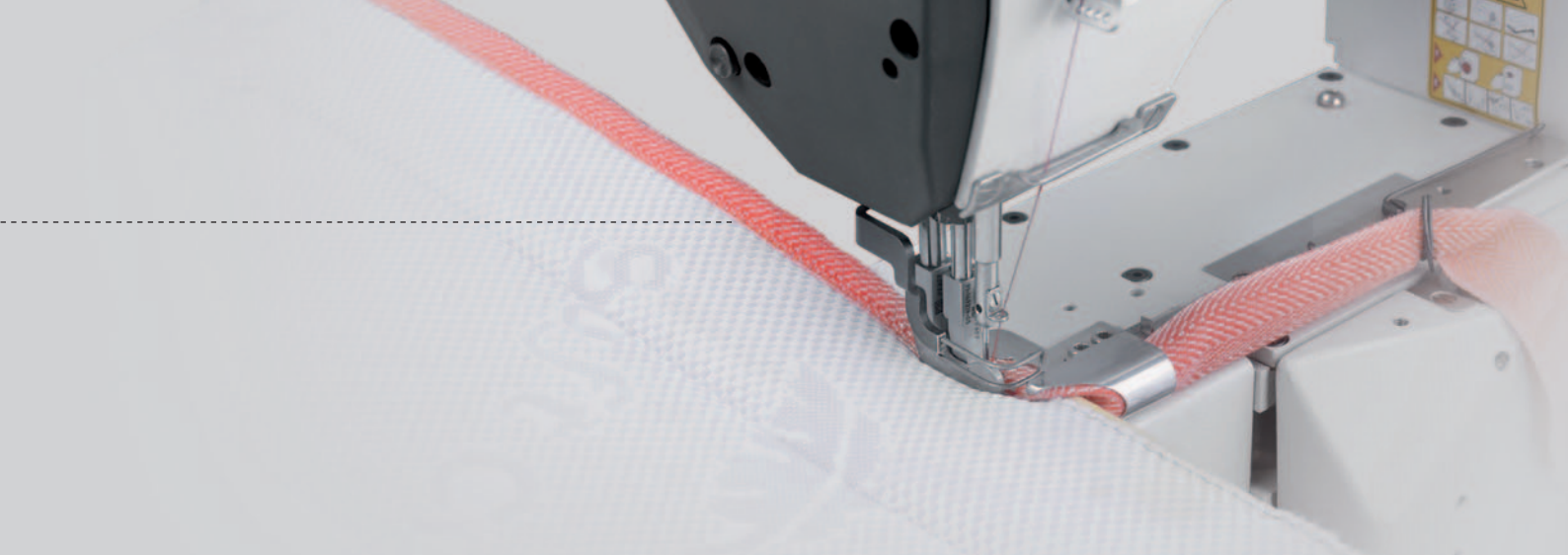
Features/Advantages:

- Worldwide proven machine concept for the mattress production
- High traction due to unison feed (bottom feed and alternating top and needle feed)
- Looper working in feeding direction (INLINE)
- High top feed stroke: max. 7 mm / Sewing foot clearance: max. 11 mm
- Special shortened free-arm version
- Maintenance is kept to a minimum due to a reliable fresh-oil lubrication system.
The oil distribution system is specifically designed for the angled machine mounting.
- Anti-friction bearings used on all main components
- Sewing head is weight optimized for sewing units
- Stitch type 401 = Single-needle double-chainstitch (-840/01)
- Easy front cover access (machine head) in seconds without tools
(Standard in versions -657/10 and -657/20)

Options:

- Easy front cover access (machine head) as conversion kit
- LED light 1W with power supply (No. 71-250 003-96)
- Blower device to blow fluff off (No. 91-271 506-90)
- Needle cooler (No. 91-271 248-90)





	Parts kit		Pneumatic presser foot lifting and tension opening, stroke adjustment via hand wheel	
	-6/98	-6/01	-657/01	-657/10
5625 -840/01...-906/07	extra wide parts kit	standard parts kit	optional conversion kit: Easy front cover access	inclusive easy front cover access
Product no.: 901-5625-001/102	x		x	
Product no.: 901-5625-010/101		x		x

	Parts kit		Mechanical presser foot lifting and tension opening, stroke adjustment via crank	
	-6/98	-6/01	-657/02	-657/20
5625 -840/01	extra wide parts kit	standard parts kit	optional conversion kit: Easy front cover access	inclusive easy front cover access
Product no.: 901-5625-002/102	x		x	
Product no.: 901-5625-020/101		x		x



Specifications:

Stitch type:

401 (Double chain stitch)

Max. sewing speed:

3.500 s.p.m.

Needle system:

SY 4112

Needle size, max.

180 Nm

Thread size, max.

11/3 syn

Max. stitch length (forward):

8,5 mm

Presser foot lift (by hand):

11 mm

Presser foot lift (via cylinder):

11 mm

Subject to alternations in design, dimensions and weight.
Pictures/graphics could show additional equipment.

**PFAFF Industriesysteme
und Maschinen GmbH**

Hans-Geiger-Str. 12 – IG Nord

D-67661 Kaiserslautern

Telefon: +49-6301/3205-0

Telefax: +49-6301/3205-3171

E-mail: info@pfaff-industrial.com

Website: www.pfaff-industrial.com