

PFAFF[®] Industrial

The latest generation
of high-speed seamers

1180

fast - intelligent - powerful



PFAFF 1180

The latest generation of high-speed seamers in the Sewing Industry.

An intelligent machine concept and the use of extremely wear-resistant components guarantee the quality, flexibility and sewing speed of this high-speed seamer. 40 years of experience with the production of "dry machines" and more than 10 years of experience with motors integrated in the sewing head are reflected in these high-speed seamers. Complex assembly work is not required. The machine is supplied ready for use.

The quiet running of the low-vibration machines is one of the outstanding features. The built-in drive unit, AC-SERVO, transmits the power directly (direct drive) to the machine and guarantees a 50% reduction of the power consumption compared to conventional drive units.

The machine works with very low thread tension settings. The needle bar stroke can be changed from 30 to 36 mm, which is an absolute requirement for sewing an extremely wide range of materials.



+ Bobbin thread monitor with rest thread sensor -926/06 (optional)



+ The new controlled thread nipper -909/14 always ensures a neat seam start



+ **WORLDS FIRST!** More than 10 years of experience with the sewing drive unit integrated in the sewing head

- + Large "horizontal hook"
 - bobbin thread capacity increased by 50%
 - number of bobbin changes reduced by about 25% with the new "G-hook"
- + 40 years of „dry machines“ (no oil-sump)
- + High flexibility due to the adjustable needle bar stroke (30 to 36 mm).
One machine for all material thicknesses
- + Up to 13 mm presser foot clearance (with 36 mm needle bar stroke)
- + Eccentric for tilting the feed dog
- + Concealed cable guide integrated in the sewing head
- + Knife/catcher change for the thread trimming device without readjustment
- + Integrated solutions for presser foot lift, backtacking mechanism without compressed air
- + Up to 6 mm stitch length – forward and reverse (on the C-model of the PFAFF 1181/83)
- + Computer-optimised kinematics of take-up lever, feed dog and needle bar motion
- + Sewing head auto select system to recognize set sewing programs and pre-set parameters for service purposes
- + Interface for PC-connection for communication/network and software downloading
- + Integrated bobbin thread winder
- + **1181-D**: Oil free sewing (if desired) – by simply changing the hook (4,000 s.p.m.)
- + Bobbin rest thread sensor -926/06 with optical display (optional)
- + The thread nipper -909/14 is controlled electronically, the presser foot is raised momentarily and the needle thread is pulled through to the underside of the workpiece.

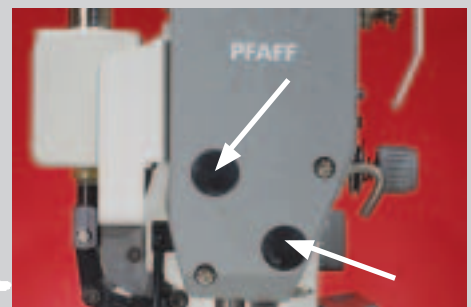


New triple switch within reach of the operator:

- forward/reverse
- needle up without trimming
- backtack inversion/activation
- threading key



One machine for thick and thin material: adjustable needle bar stroke



Presser foot and needle bar height can be adjusted from the outside

Main classes:

1183 This high-speed seamer (with drop feed) works with an optimised hook and needle bar lubrication. It can sew top quality seams at a speed of 5,000 s.p.m. without any problem.

1181 As the PFAFF 1183, but with compound feed

	Machine type	Large hook	Part set	Versions	Side cutter -731/01	Thread trimmer -900/24	Controlled thread nipper -909/14	Automatic presser foot -910/06	Backtacking mechanism -911/37	Bobbin thread monitor -926/06	Control panel
	1181		8/11	B, N 4.5	●	●	●	●	●		BDF-S2
			8/11	B, N 4.5		●	●	●	●	●	BDF-S2
			8/13	C, N		●	●	●	●		BDF-S2
		G	8/13	C, N		●	●	●	●		BDF-S2
				34/11	A, N 3.0		●	●	●	●	BDF-S2
	1183		8/31	B, N 4.5	●	●	●	●	●		BDF-S2
			8/31	B, N 4.5		●	●	●	●	●	BDF-S2
			8/33	C, N		●	●	●	●		BDF-S2
G		8/33	C, N		●	●	●	●		BDF-S2	
			34/31	A, N 3.0		●	●	●	●	BDF-S2	
			8/44	B, N 4.5		●	●	●		BDF-S2	
PULLER -948/26	1181		8/92	B, N 4.5		●	●	●	●	●	BDF-S2
			34/92	A, N 3.0		●	●	●	●	●	BDF-S2
	1183		8/93	B, N 4.5		●	●	●	●	●	BDF-S2
			34/93	A, N 3.0		●	●	●	●	●	BDF-S2
SRP	1181		8/11	B, N 4.5		●	●	●	●	●	BDF-S2
			34/11	A, N 3.0		●	●	●	●	●	BDF-S2
	1183		8/31	B, N 4.5		●	●	●	●	●	BDF-S2
			34/31	A, N 3.0		●	●	●	●	●	BDF-S2

● = Optional
● = Standard

Trimming margins on the -731/01: 5 mm
(others on request)

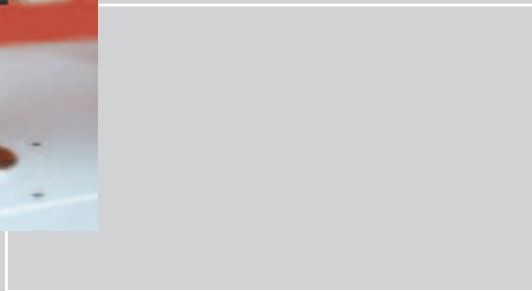
From SILK to JEANS:

The part sets of the high-speed seamer series:



Version A

For sewing delicate materials



-34/31 A N3.0
A-part set
(drop feed)
for PFAFF 1183

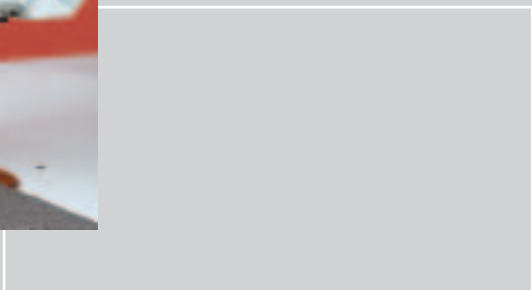


-34/11 A N3.0
A-part set
(needle feed)
for PFAFF 1181



Version B

For sewing medium materials



-8/31 B N4.5
B-part set
(drop feed)
for PFAFF 1183

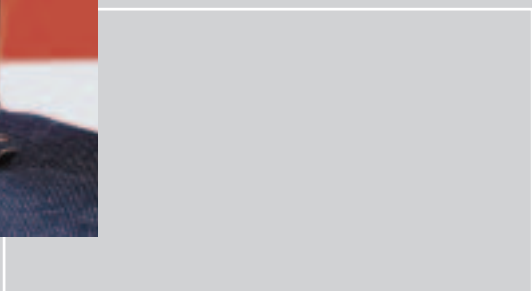


-8/11 B N4.5
B-part set
(needle feed)
for PFAFF 1181



Version C

For sewing medium-heavy materials



-8/33 C N
C-part set
(drop feed)
for PFAFF 1183



-8/13 C N
C-part set
(needle feed)
for PFAFF 1181



Pfaff's Premium High-Speed Seamers:

Puller



Puller with standard presser foot (closed)



Puller with presser foot and adapter



Easy adjustment to different puller widths

PFAFF 1180 with puller (-948/26)

The new PFAFF puller drive generation for high-speed seamers with intermittent puller feed is just right for main application sectors such as seam closing, top-stitching and hemming mainly long seams. The highly-efficient intermittent puller feed makes the work of the operator easier in a large number of cases. The result with the puller machines is a high-quality seam. Smooth, elegantly falling seams on difficult light to medium materials are the strong point of the PFAFF intermittent puller feed.



Features/Advantages

- Using the control panel, the puller roller feed and roller pressure are adapted directly and simply to the requirements, therefore ensuring smooth seams
- The all-purpose machine - the puller can be raised, stopped and swung out of the work area manually
- Puller unit can be shifted to the side of the needle
- Puller roller (steel): 10 mm standard
- Puller roller (plastic) in different widths: 10, 15, 20 and 30 mm
- Bobbin rest thread sensor (-926/06) always guarantees completed seams (optional)
- Microfine to medium parts sets for best feed properties
- „Flash facility“ for software updates without changing the E-prom and without opening the control unit
- By storing the individual settings, the sewing head auto select system makes servicing easy

SRP

PFAFF 1180 with SRP

New-generation, premium high-speed seamers. With SRP (speed responsive presser foot control) these intelligent machines are equipped with a system, which, depending on the speed, increases or reduces the presser foot pressure during sewing. The highly dynamic system reduces puckering (ply shift puckering) to almost zero. These flexible high-speed seamers offer maximum sewing comfort due to the excellent feed properties in conjunction with the SRP system and the infinitely variable automatic presser foot lift. Best results are achieved on closing and top-stitched seams where high-quality is demanded.



Features/Advantages

- Highly effective feed system (SRP) during sewing – only minimal shifting of the workpiece even at high sewing speeds
- Very low thread tension required – with constant, high-quality seam = minimum tension puckering
- Next to no shifting of the workpieces when sewing difficult fabrics on ladies' and men's outerwear
- Presser foot pressure can be adapted individually to the sewing operation
- SRP is a great support for easy application of small amounts of fullness
- Optimum high-powered feed system for sewing over folds, bulky parts and multi-layered seams etc.
- Infinitely variable presser foot height, operated by knee switch, for easy "corner turning"
- State of the art software updates without changing the E-prom and without opening the control unit
- By storing the individual settings, the new sewing auto select system makes servicing easy
- Process-controlled foot lift - no thread wiper required
- Microfine to medium part sets
- Bobbin rest thread sensor (-926/06) always guarantees completed seams (optional)

*„One day all high-speed seamers
will be equipped with SRP“*

Specifications:

Stitch type:

301 (lockstitch)

Max. stitch length:

6 mm

Max. fabric clearance:

13 mm

Needle bar stroke:

adjustable to 30 or 36 mm

Needle system:

134 (DBx1)

Needle sizes:

A-version: max. 80

B-version: max. 100

C-version: max. 140

Connection voltage:

single-phase a.c.,

230 V, 50/60 Hz

Power input:

0.4 KW

Weight: gross/net

approx. 54 kg / approx. 49 kg

Dimensions/cardboard box:

33 x 66 x 72 cm

Hotlines:

Technical service: +49-175/2243-101

Application consultancy: +49-175/2243-102

Spare-parts hotline: +49-175/2243-103



Europäische Union

Wachstum durch Innovation – EFRE

**PFAFF Industriesysteme
und Maschinen AG**

Hans-Geiger-Str. 12 – IG Nord
D-67661 Kaiserslautern

Telefon: +49-6301/3205-0

Telefax: +49-6301/3205-3171

E-mail: info@pfaff-industrial.com

Printed in Germany
engl.
296-12-18772 06/09